

Paduana für 5 Posaunen (oder Gamben)

(Celle 1624)

Heinrich Utrecht (?-1633)

$\text{♩} = 70$

Tromp. 1

Tromp. 2

Tromp. 3

Tromp. 4

Tromp. 5

⑤

T. 1

T. 2

T. 3

T. 4

T. 5

T. 1

T. 2

T. 3

T. 4

T. 5

(C) Jürgen Knuth

Paduana für 5 Posaunen(Gamben) / Heinrich Utrecht (?-1633)

⑭

Musical score for five trumpets (T.1 to T.5) in 3/4 time, measures 14-18. The score is written in bass clef with a key signature of one flat. T.1 has a circled measure number 14. The music consists of rhythmic patterns with eighth and sixteenth notes, and rests.

Musical score for five trumpets (T.1 to T.5) in 3/4 time, measures 19-21. The music continues with rhythmic patterns and includes some chromaticism, such as a sharp sign in T.1 and T.4.

⑮

Musical score for five trumpets (T.1 to T.5) in 3/4 time, measures 22-26. The music features more complex rhythmic figures, including sixteenth-note runs in T.3 and T.4. T.1 has a circled measure number 22. The score concludes with a double bar line and repeat dots.

Paduana für 5 Posaunen

(Celle 1624)

Heinrich Utrecht
(?-1633)

1. Posaune

5

14

22

The image shows the musical score for the first trumpet part of the piece 'Paduana für 5 Posaunen'. The score is written in 3/8 time and C major. It consists of five staves of music. The first staff starts with a treble clef and a key signature of one sharp (F#). The music begins with a quarter note G4, followed by a quarter note A4, and then a half note B4. The second staff starts with a measure rest, followed by a quarter note G4, a quarter note A4, and a half note B4. The third staff starts with a quarter note G4, a quarter note A4, and a half note B4. The fourth staff starts with a quarter note G4, a quarter note A4, and a half note B4. The fifth staff starts with a quarter note G4, a quarter note A4, and a half note B4. The score ends with a double bar line and repeat dots.

Paduana für 5 Posaunen

(Celle 1624)

Heinrich Utrecht (?-1633)

2. Posaune

5

14

22

Paduana für 5 Posaunen

(Celle 1624)

Heinrich Utrecht (?-1633)

3. Posaune  Musical notation for the 3rd trumpet part, measures 1-4. The staff is in bass clef. Measure 1: quarter note G2, quarter note G2, half note G2. Measure 2: quarter note G2, quarter note A2, half note G2. Measure 3: quarter note G2, quarter note A2, quarter note B2, quarter note A2. Measure 4: quarter note B2, quarter note C3, quarter note B2, quarter note A2.

5  Musical notation for the 3rd trumpet part, measures 5-8. Measure 5: quarter note G2, quarter note A2, quarter note B2, quarter note A2. Measure 6: half note G2, half note G2. Measure 7: quarter rest, quarter note G2, quarter note A2, quarter note B2, quarter note A2. Measure 8: half note G2, half note G2.

 Musical notation for the 3rd trumpet part, measures 9-13. Measure 9: quarter note G2, quarter note A2, quarter note B2, quarter note A2. Measure 10: half note G2, half note G2. Measure 11: quarter note G2, quarter note A2, quarter note B2, quarter note A2. Measure 12: quarter note G2, quarter note A2, quarter note B2, quarter note A2. Measure 13: quarter note G2, quarter note A2, quarter note B2, quarter note A2.

14  Musical notation for the 3rd trumpet part, measures 14-17. Measure 14: quarter note G2, quarter note A2, quarter note B2, quarter note A2. Measure 15: quarter note G2, quarter note A2, quarter note B2, quarter note A2. Measure 16: quarter note G2, quarter note A2, quarter note B2, quarter note A2. Measure 17: quarter note G2, quarter note A2, quarter note B2, quarter note A2.

 Musical notation for the 3rd trumpet part, measures 18-21. Measure 18: quarter note G2, quarter note A2, quarter note B2, quarter note A2. Measure 19: quarter note G2, quarter note A2, quarter note B2, quarter note A2. Measure 20: quarter note G2, quarter note A2, quarter note B2, quarter note A2. Measure 21: quarter note G2, quarter note A2, quarter note B2, quarter note A2.

22  Musical notation for the 3rd trumpet part, measures 22-25. Measure 22: quarter note G2, quarter note A2, quarter note B2, quarter note A2. Measure 23: quarter note G2, quarter note A2, quarter note B2, quarter note A2. Measure 24: quarter note G2, quarter note A2, quarter note B2, quarter note A2. Measure 25: quarter note G2, quarter note A2, quarter note B2, quarter note A2.

Paduana für 5 Posaunen

(Celle 1624)

Heinrich Utrecht (?-1633)

4. Posaune



Musical notation for the 4th trumpet part, starting at measure 1. The staff is in bass clef. The melody begins with a dotted quarter note, followed by eighth and quarter notes, and ends with a quarter note.

5




Musical notation for the 4th trumpet part, starting at measure 5. The staff is in bass clef. The melody continues with eighth and quarter notes, followed by a quarter rest and then eighth and quarter notes.



Musical notation for the 4th trumpet part, starting at measure 9. The staff is in bass clef. The melody continues with quarter and eighth notes, followed by a quarter note and a half note.

14



Musical notation for the 4th trumpet part, starting at measure 14. The staff is in bass clef. The melody continues with quarter and eighth notes, followed by a quarter note and a half note.



Musical notation for the 4th trumpet part, starting at measure 18. The staff is in bass clef. The melody continues with quarter and eighth notes, followed by a quarter note and a half note.

22



Musical notation for the 4th trumpet part, starting at measure 22. The staff is in bass clef. The melody continues with quarter and eighth notes, followed by a quarter note and a half note.

Paduana für 5 Posaunen

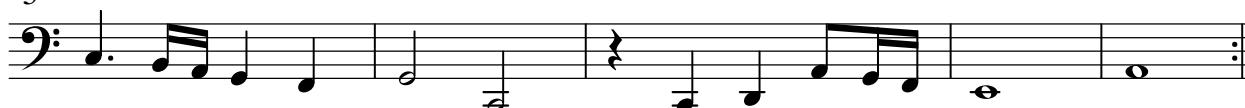
(Celle 1624)

Heinrich Utrecht (?-1633)

5. Posaune



5



14



22



(C) Jürgen Knuth