

Zu dem Berg der Seligkeiten

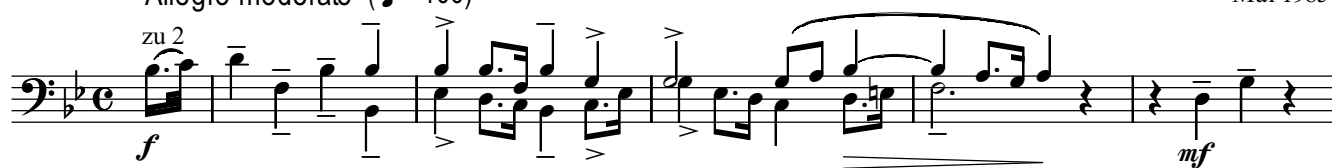
Fantasie für Orchester

nach einer Melodie von J.R. Sweney

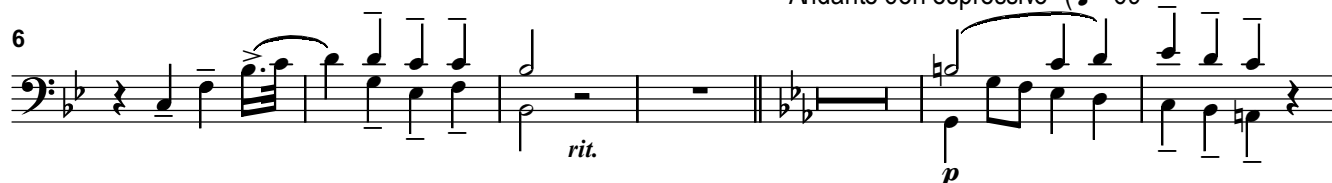
Gustav Kilmer

Mai 1985

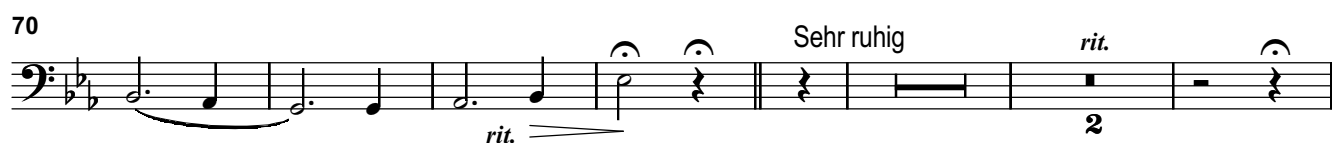
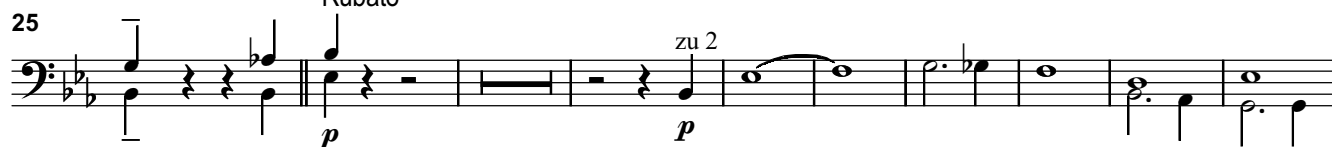
Allegro moderato (♩ = 100)



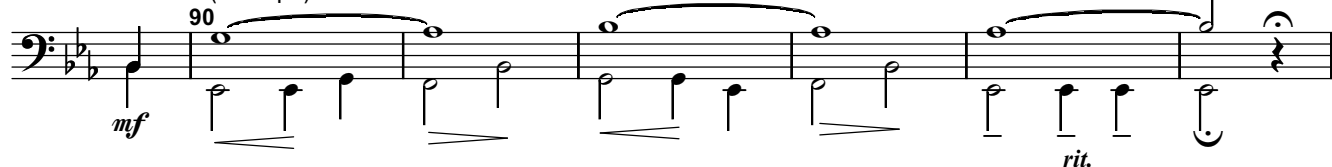
Andante con espressivo (♩ = 69 -)



Rubato



Rubato (a tempo)



Allegro moderato (Tempo I)

